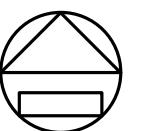


BASEMENT

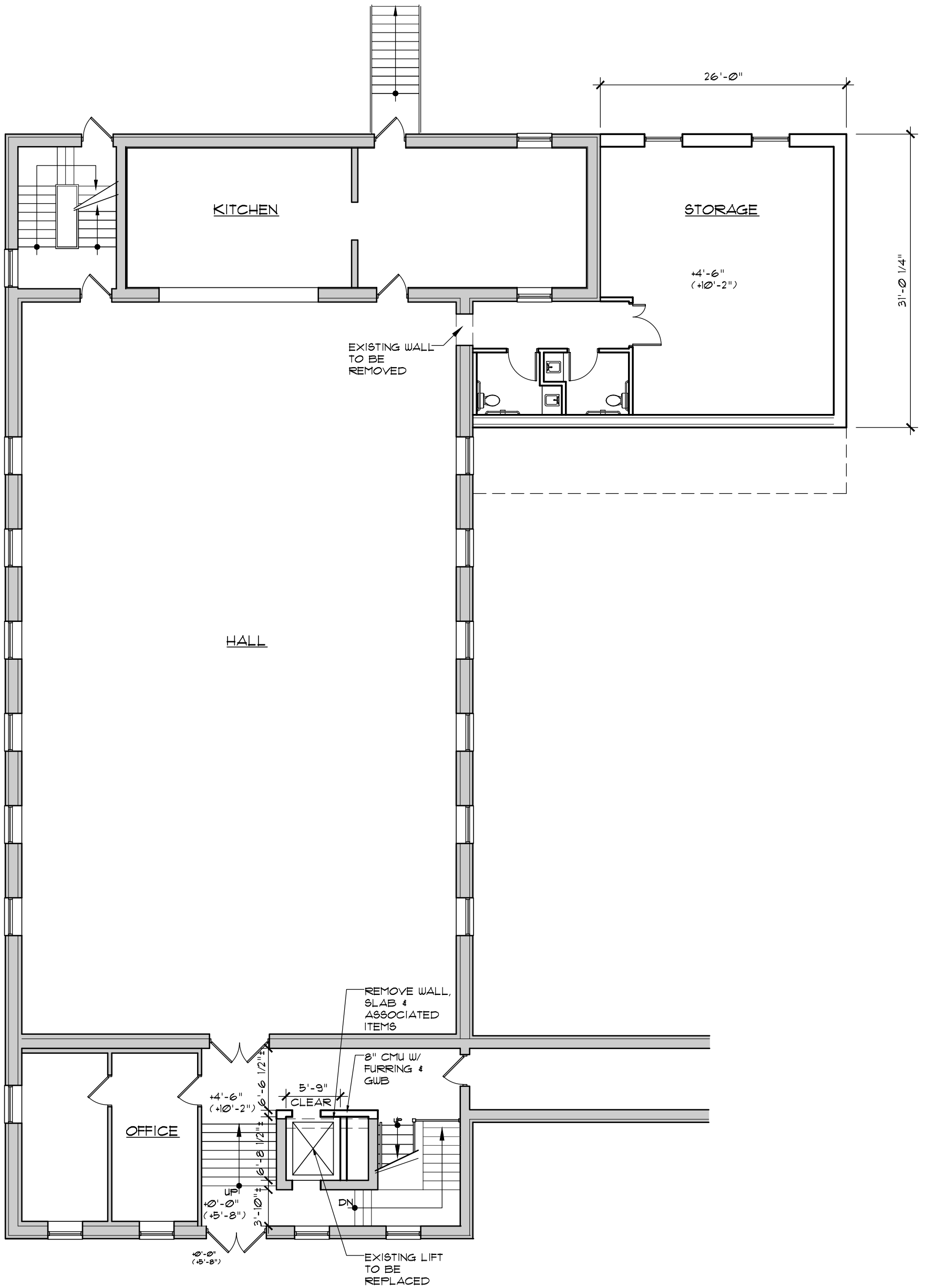


NORTH

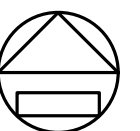
GREEK ORTHODOX CHURCH
SCHEMATIC FLOOR PLAN

3/32 = 1'-0"

10-4-24



1ST FLOOR



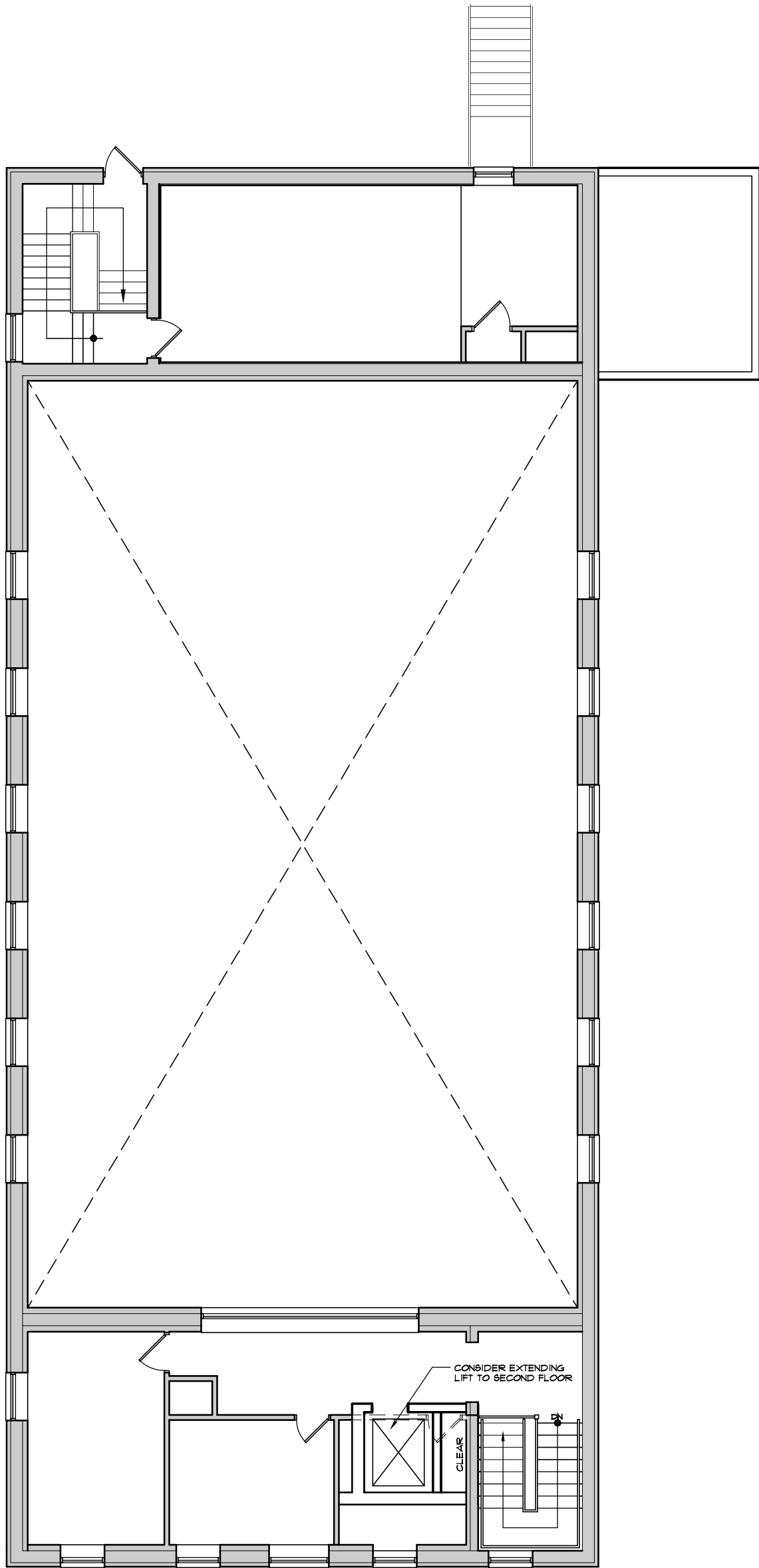
NORTH

GREEK ORTHODOX CHURCH

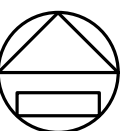
SCHEMATIC FLOOR PLAN

3/32 = 1'-0"

10-4-24



2ND FLOOR



NORTH

GREEK ORTHODOX CHURCH

SCHEMATIC FLOOR PLAN

3/32 = 1'-0"

10-4-24